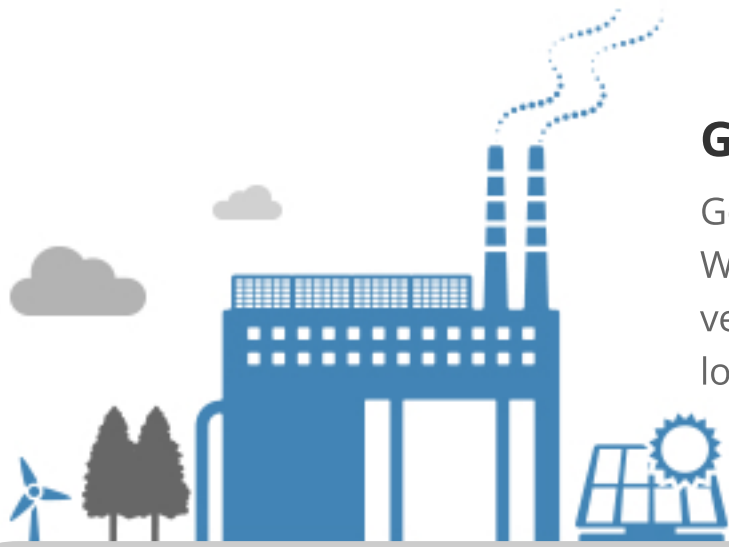


Electricity at a Glance

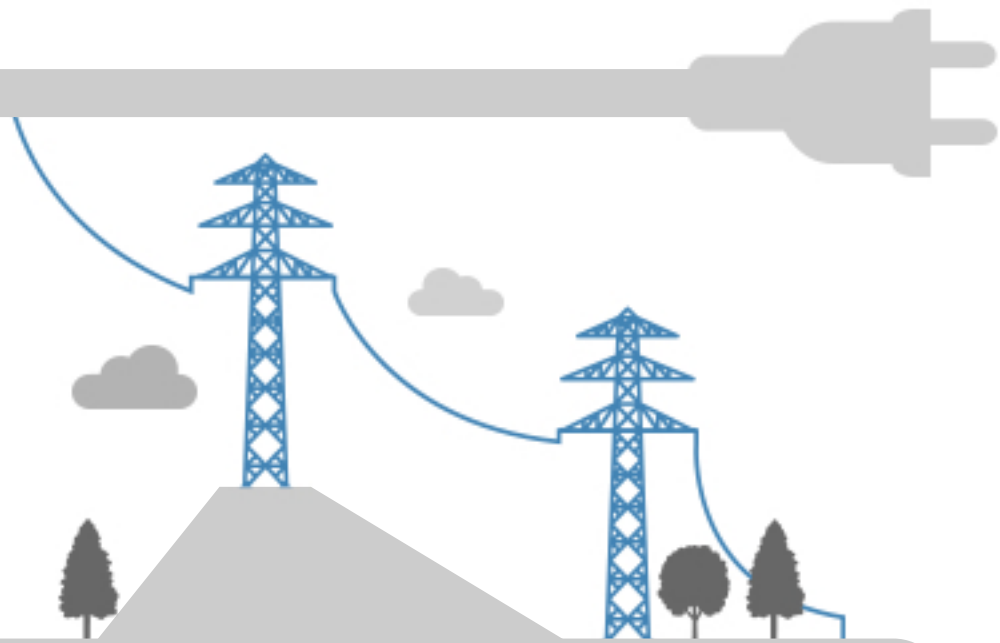


Generator/power plants

Generators convert thermal, mechanical, chemical, or nuclear energy into electric energy. When energy leaves a power plant, it enters the electricity system at a substation. Since very high electric voltages are required to move electricity long distances, the substation located at the power plant increases the voltage.

Transmission lines and poles

The energy then travels from the power plant through AltaLink's transmission lines to a substation located in an individual service area, such as your community or neighbourhood.



Substations

Substations reduce the high transmission voltage to a lower level that is suitable for local distribution lines. The electricity is transferred to FortisAlberta's local distribution lines at this substation.

Distribution lines and poles

Distribution lines carry the electricity to a transformer, a device located on a power pole, used for reducing voltage to a level that matches the level of your home, farm or business.



Where We Work



Power lines and meters

A power line carries electricity, in either underground or overhead lines, into the meter at your home, farm or business. A power line is either a transmission (high voltage) or distribution (low voltage) line.

Where We Work

Retailers

Many of your day-to-day dealings with Alberta's electrical industry are probably with your billing company. Billing companies are also known as retailers, and they're the people or companies that sell you your electrical energy.



Dedicated to
240
Alberta
communities

Call us any time at:
310-WIRE (9473)
1-866-717-3113

FORTIS
ALBERTA