

# Reducing Wildfire Risk

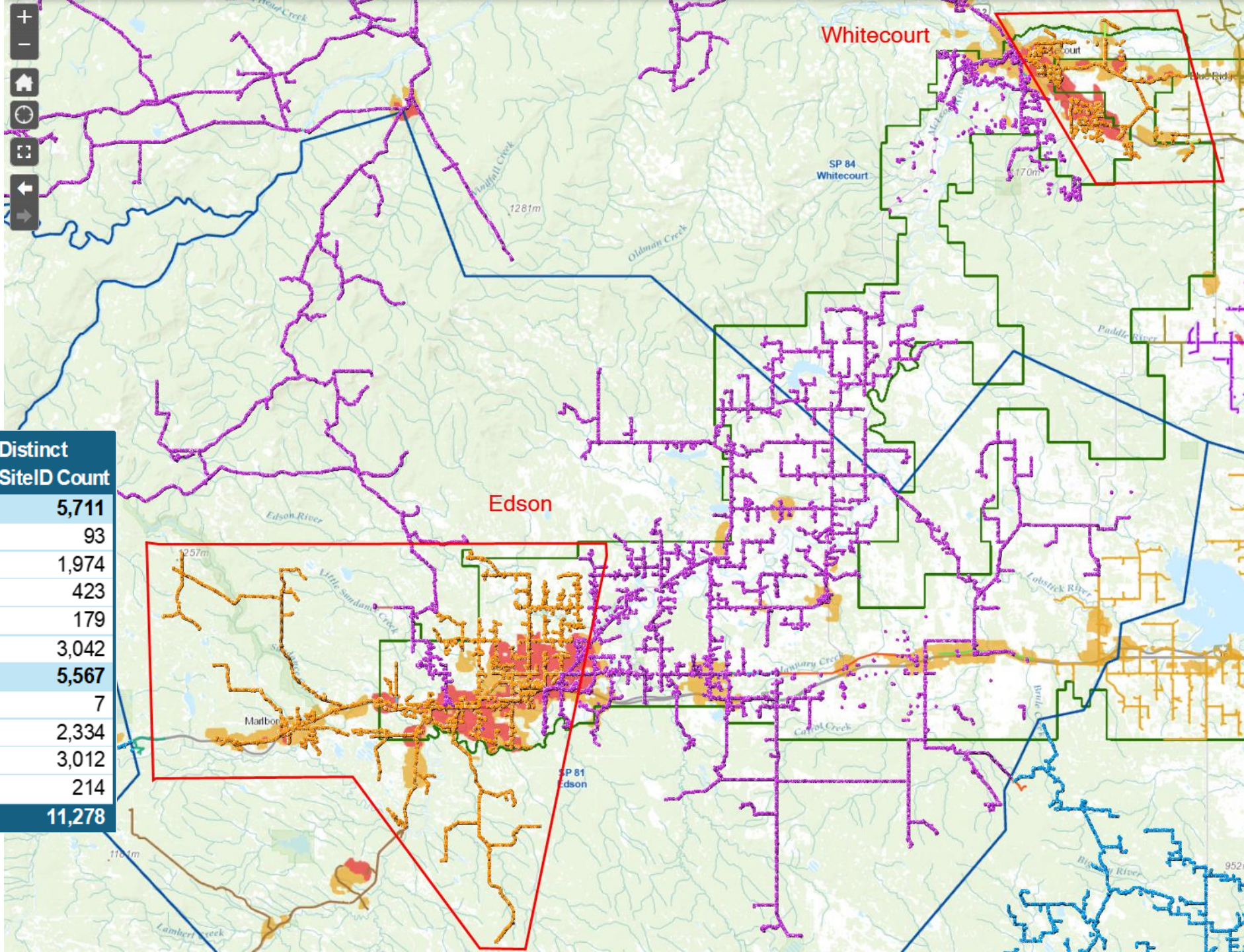


» Maps of designated areas where FortisAlberta is introducing new operational procedures in 2025 are provided on the following three pages. For more detailed maps please contact FortisAlberta at 310-WIRE (9473).

**New procedures in 2025:**  
Public Safety Power Shutoff (PSPS)  
Enhanced Powerline Safety Settings (EPSS)

# Yellowhead County, Woodlands County and portions of Edson and Whitecourt

Designated areas are outlined in red on the map.

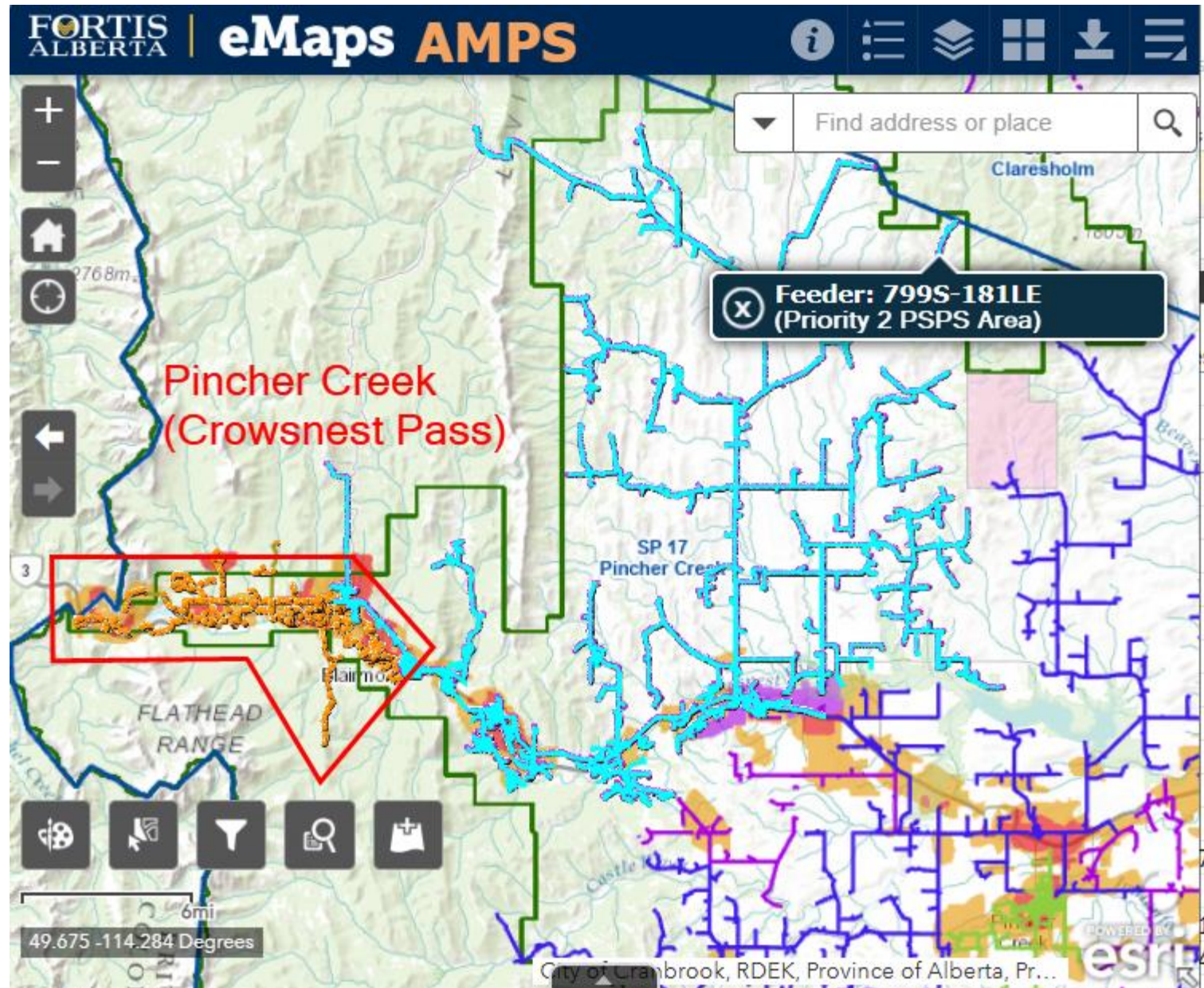


SP/Feeder	Weighted Risk Average	Pole Count Sum	Distinct SiteID Count
<b>Edson</b>	<b>19.2022</b>	<b>7,826</b>	<b>5,711</b>
58S-153LW	4.4085	284	93
58S-155LE	3.9269	2,749	1,974
58S-334LW	3.1550	1,942	423
58S-376LS	3.3994	1,555	179
58S-377LE	4.3125	1,296	3,042
<b>Whitecourt</b>	<b>16.9540</b>	<b>1,987</b>	<b>5,567</b>
364S-295L	4.2391	46	7
364S-368LW	4.1553	837	2,334
364S-473LN	4.6476	525	3,012
364S-484L	3.9119	579	214
<b>Grand Total</b>		<b>9,813</b>	<b>11,278</b>

# Crowsnest Pass from Blairmore to Coleman

Designated areas are outlined in red on the map.

SP/Feeder	Weighted Risk Average	Pole Count Sum	Distinct SiteID Count
<b>Pincher Creek</b>	<b>8.0813</b>	<b>2,582</b>	<b>2,098</b>
799S-175LW	4.3928	1,105	546
799S-179LW	3.6886	1,477	1,552
<b>Grand Total</b>		<b>2,582</b>	<b>2,098</b>



# Bow Valley Corridor

» Include areas from west to east from Lake Louise to Stoney Nakoda and south to Peter Lougheed Provincial Park.

Designated areas are outlined in red on the map.

SP/Feeder	Weighted Risk Average	Pole Count Sum	Distinct SiteID Count
<b>Canmore</b>	<b>77.3115</b>	<b>4,988</b>	<b>18,206</b>
115S-404LS	3.1580	367	116
115S-4737L	3.0000	10	1
118S-2286L	4.4784	439	3,552
118S-487LW	4.2337	599	4,576
118S-488LW	3.8627	357	4,706
123S-2110L	5.4815	27	18
123S-425T	4.9677	186	1,934
123S-55T	4.6410	312	403
123S-FEEDER2	5.2275	255	1,683
245S-79LW	4.6717	1,389	672
35S-64LS	3.7195	246	27
48S-132LN	3.3666	371	136
551EL-UNC	5.0000	16	13
551GL-10224T	5.3390	59	16
551IL-10222T	4.9241	79	7
945S-2496T	2.5556	99	5
953S-2167T	2.7652	115	2
953S-2397T	5.9194	62	339
<b>Cochrane</b>	<b>4.3985</b>	<b>4,153</b>	<b>1,206</b>
245S-69LE	4.3985	4,153	1,206
<b>Grand Total</b>		<b>9,141</b>	<b>19,412</b>

