

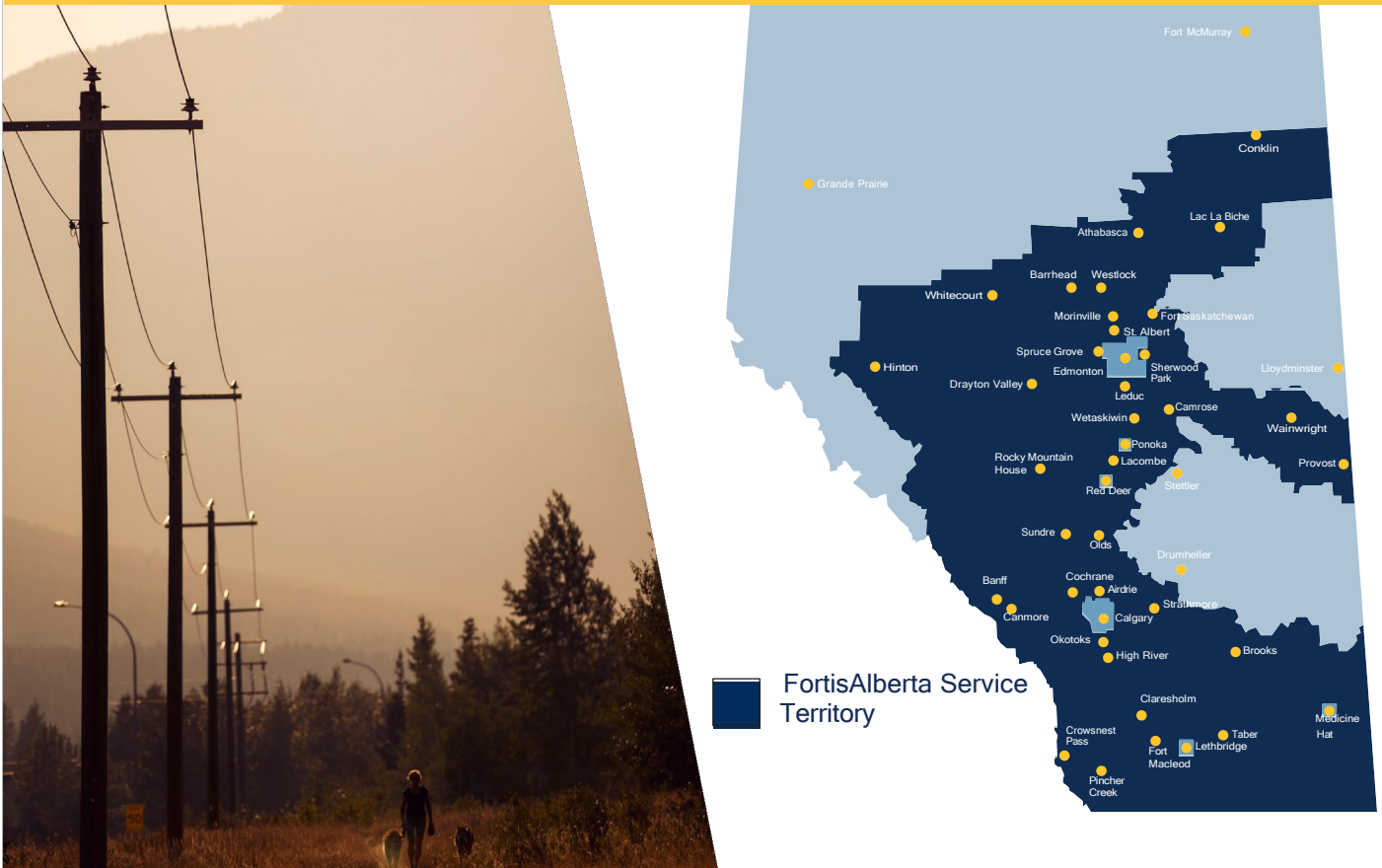
FortisAlberta’s Contribution Program

Is intended to offset a Customer’s costs for new or upgraded electricity distribution services. Many factors are considered when establishing an investment contribution such as the realistic technical life of services, a Customer’s operations, an expectation of a certain level of revenue every year for the life of the service and the minimum investment term to cover the full construction cost of a Customer’s services. If the cost is greater than the maximum investment, Customers are obligated to pay a contribution toward the service.

The following table provides a list of services coupled with FortisAlberta’s Maximum Investment Levels:

Type of Service	2025 Maximum Investment Levels (effective January 1, 2025)
Rate 11 (Residential)	\$3,100 per service
Rate 11 (Residential Development)	\$3,100 per service, less FortisAlberta’s costs of metering and final connection
Rate 21 & 22 (Farm), and Rate 23 (Grain Drying)	\$6,642 base investment, plus \$950 per kVA of Peak Demand
Rate 26 (Irrigation)	\$6,642 base investment, plus \$1,057 per kW of Peak Demand
Rate 31 (Street Lighting - Investment Option)	\$3,418 per fixture
Rate 38 (Yard Lighting)	\$945 per fixture
Rate 41 (Small General Service)	\$6,642 base investment, plus \$1,057 per kW of Peak Demand
Rate 45 (Oil and Gas Service)	\$6,642 base investment, plus \$1,057 per kW of Peak Demand FortisAlberta invests as required per unmetered to metered service conversion program.
Rate 61 (General Service - 2 MW or less), and Rate 62 (Electric Vehicle Fast Charging Service)	\$6,642 base investment, plus \$1,057 per kW for the first 150 kW, plus \$132 for additional kW of Peak Demand
Rate 63 (Large General Service - over 2 MW)	\$119 per kW of Peak Demand, plus \$131 per metre of Customer Extension

As owner and operator of more than 60 per cent of Alberta's total electricity distribution network, FortisAlberta's focus is delivering safe and reliable electricity to more than half a million residential, farm and business customers. The company employs more than 1,300 Albertans and serves more than 240 communities with 131,000 kilometres of distribution power lines across Alberta.



FortisAlberta delivers power to homes, farms and businesses across 240 communities in Alberta, but we don't work alone. We are the first point of contact for you to connect your new electricity service; however, there are many players in the overall system who make sure the power is there when you need it. Here's an overview of the different players.

