

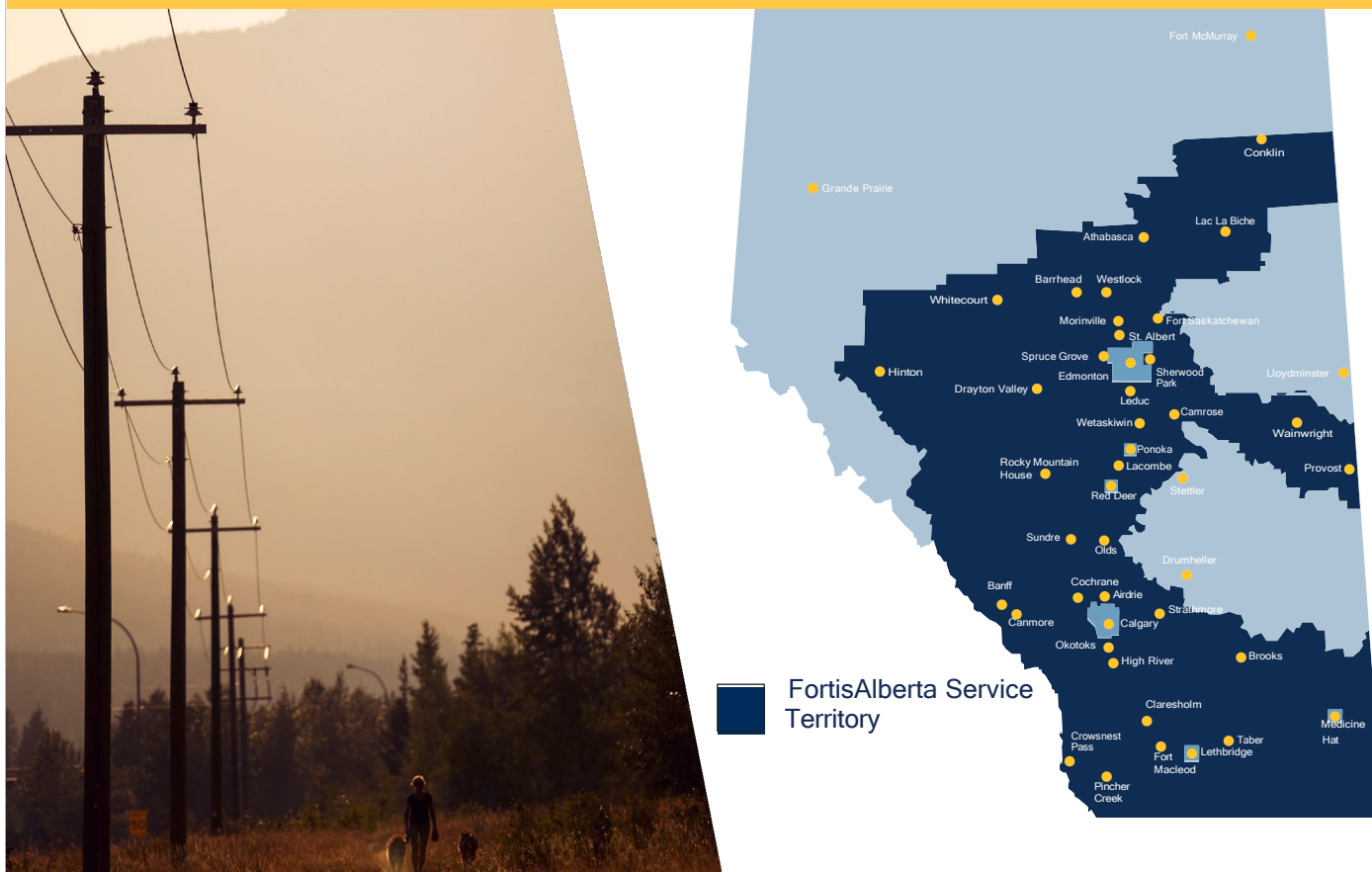
FortisAlberta's Contribution Program

Is intended to offset a Customer's costs for new or upgraded electricity distribution services. Many factors are considered when establishing an investment contribution such as the realistic technical life of services, a Customer's operations, an expectation of a certain level of revenue every year for the life of the service and the minimum investment term to cover the full construction cost of a Customer's services. If the cost is greater than the maximum investment, Customers are obligated to pay a contribution toward the service.

The following table provides a list of services coupled with FortisAlberta's Maximum Investment Levels:

| Type of Service | 2026 Maximum Investment Levels (effective January 1, 2026) |
|---|--|
| Rate 11 (Residential) | \$3,168 per service |
| Rate 11 (Residential Development) | \$3,168 per service, less FortisAlberta's costs of metering and final connection |
| Rate 21 & 22 (Farm), and Rate 23 (Grain Drying) | \$6,787 base investment, plus \$971 per kVA of Peak Demand |
| Rate 26 (Irrigation) | \$6,787 base investment, plus \$1,080 per kW of Peak Demand |
| Rate 31 (Street Lighting - Investment Option) | \$3,493 per fixture |
| Rate 38 (Yard Lighting) | \$966 per fixture |
| Rate 41 (Small General Service) | \$6,787 base investment, plus \$1,080 per kW of Peak Demand |
| Rate 45 (Oil and Gas Service) | \$6,787 base investment, plus \$1,080 per kW of Peak Demand FortisAlberta invests as required per unmetered to metered service conversion program. |
| Rate 61 (General Service - 2 MW or less), and Rate 62 (Electric Vehicle Fast Charging Service) | \$6,787 base investment, plus \$1,080 per kW for the first 150 kW, plus \$135 for additional kW of Peak Demand |
| Rate 63 (Large General Service - over 2 MW) | \$122 per kW of Peak Demand, plus \$134 per metre of Customer Extension |

As owner and operator of more than 60 per cent of Alberta's total electricity distribution network, FortisAlberta's focus is delivering safe and reliable electricity to more than half a million residential, farm and business customers. The company employs more than 1,300 Albertans and serves more than 240 communities with 133,000 kilometres of distribution power lines across Alberta.



FortisAlberta delivers power to homes, farms and businesses across 240 communities in Alberta, but we don't work alone. We are the first point of contact for you to connect your new electricity service; however, there are many players in the overall system who make sure the power is there when you need it. Here's an overview of the different players.

